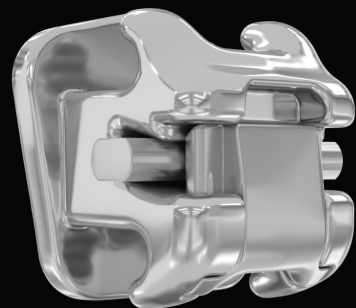


Ormco™

# DAMON ULTIMA™ SYSTEM



THE FIRST TRUE FULL EXPRESSION SYSTEM



## INTRODUCING THE REVOLUTIONARY DAMON ULTIMA™ SYSTEM

Designed for Faster & More Precise Finishing

Traditional passive self-ligation brackets and wires have significant play, resulting in poor control, manual adjustments, and extended treatment time.

The Damon Ultima System is the first full expression orthodontic system designed for faster and more precise finishing. It is completely reengineered to virtually eliminate play for precise control of rotation, angulation and torque.



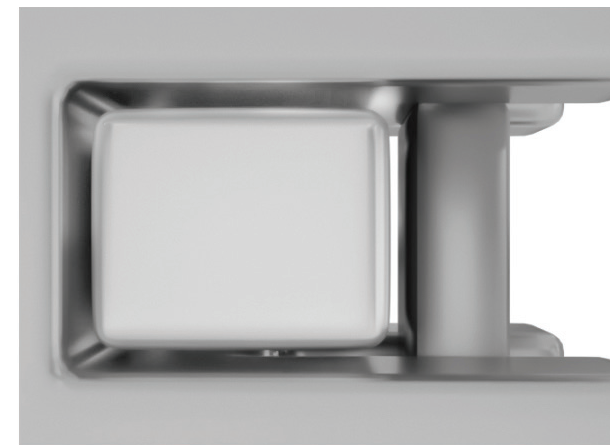
“The first archwire-bracket assembly finally capable of delivering true full expression.”

- Dr. Dwight Damon

\*Dr. Dwight Damon is a paid consultant for Ormco. The opinions expressed are those of Dr. Damon's. Ormco is a medical device manufacturer and does not dispense medical advice. Clinicians should use their own professional judgement in treating their patients.

## INTEGRATED SYSTEM VIRTUALLY ELIMINATES PLAY

The Damon Ultima System is designed with a proprietary round-sided rectangular wire and parallelogram-shaped slot to deliver direct engagement at vertical and horizontal contact points.



TRADITIONAL PSL

Excessive play resulting in poor control



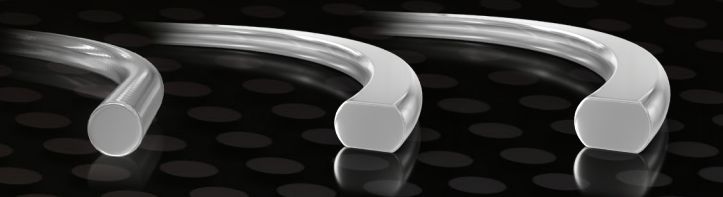
DAMON ULTIMA SYSTEM

Four contact points for precise control of rotation, angulation, and torque

## PRECISE CONTROL OF ROTATION, ANGULATION AND TORQUE

Achieve earlier control with rotations completed in the first Damon Ultima round-sided rectangular wire and full expression with the second Damon Ultima wire with lighter forces.

### TYPICAL WIRE PROGRESSION



Round Wires  
.014, .018 CuNiTi

**DAMON ULTIMA**  
Round-Sided  
Rectangular Wire  
.014 x .0275 CuNiTi

**DAMON ULTIMA**  
Round-Sided  
Rectangular Wire  
.018 x .0275 CuNiTi



### ROTATION

The round-sided rectangular Damon Ultima wire engagement at the horizontal contact points delivers earlier rotation control.



### ANGULATION

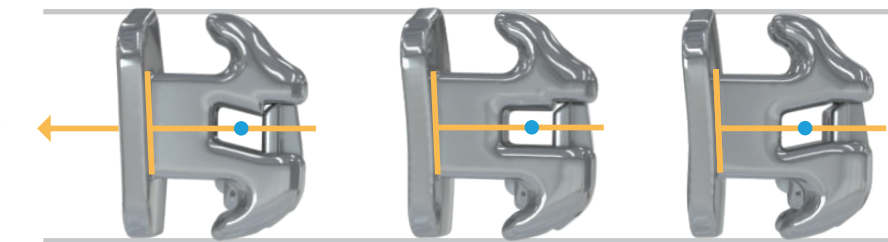
Angulation is then resolved earlier with vertical contacts.



### TORQUE

Engagement at vertical contact points delivers torque control and full expression of the prescription with lighter forces.

## RETROCLINE & PROCLINE BRACKET OPTIONS FOR ENHANCED TORQUE CONTROL



**PROCLINE**  
High Torque

**NEUTRAL**

**RETROCLINE**  
Low Torque

Brackets are designed from the center point of the slot to line up with the FA point to express the desired torque and provide easier and more precise placement.

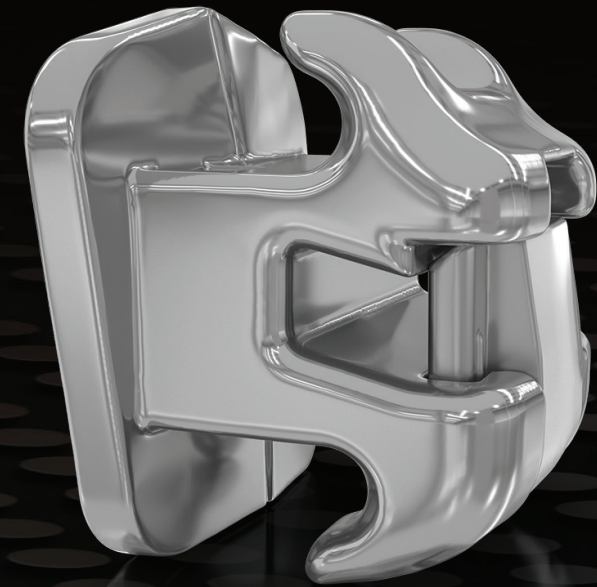
### ADDITIONAL ARCHWIRE OPTIONS FOR TORQUE CONTROL WHEN NEEDED

Larger sizes available in:

- .019 X .0275, .020 X .0275, .021 X .0275 and in CuNiTi, TMA, and SS
- .016 X .0275 SS available for challenging transverse and leveling



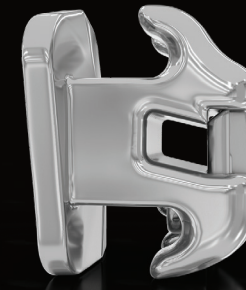
ENHANCED FEATURES:  
EASY, CONVENIENT AND RELIABLE\*



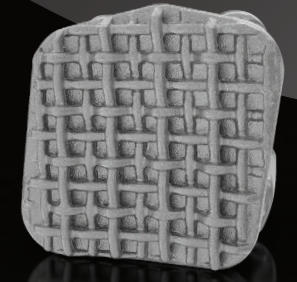
Completely reengineered **tie-wing** improves ability to engage and ligate C-chain



**Smoother tie wings** designed for better patient comfort and minimal occlusal interference



**Bracket base with 80 gauge mesh** designed for reliable bond strength throughout treatment and a predictable debonding experience



**Easy to open and close door design** with low reciprocal forces and tactile feedback

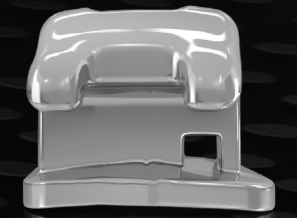
**Bracket door and wire** designed to reduce door closure interference



**Rhomboid shaped pad and enhanced scribe line** help guide bracket placement



Vertical slot allows for **convenient placement of drop-in hooks** designed for durability with Ormco's elastics and auxiliaries



# ORDERING INFORMATION

MAXILLARY	Part Number	Description
Central Neutral	333-2100	U1L Damon Ultima .022 +7/5/0 Neutral TQ
	333-1100	U1R Damon Ultima .022 +7/5/0 Neutral TQ
Central Retrocline	333-2110	U1L Damon Ultima .022 Retrocline TQ
	333-1110	U1R Damon Ultima .022 Retrocline TQ
Central Procline	333-2120	U1L Damon Ultima .022 Procline TQ
	333-1120	U1R Damon Ultima .022 Procline TQ
Lateral Neutral	333-2200	U2L Damon Ultima .022 +3/9/0 Neutral TQ
	333-1200	U2R Damon Ultima .022 +3/9/0 Neutral TQ
Lateral Retrocline	333-2210	U2L Damon Ultima .022 Retrocline TQ
	333-1210	U2R Damon Ultima .022 Retrocline TQ
Lateral Procline	333-2220	U2L Damon Ultima .022 Procline TQ
	333-1220	U2R Damon Ultima .022 Procline TQ
Cuspid Neutral	333-2300	U3L Damon Ultima .022 -2/5/0 Neutral TQ
	333-1300	U3R Damon Ultima .022 -2/5/0 Neutral TQ
Cuspid Retrocline	333-2310	U3L Damon Ultima .022 Retrocline TQ
	333-1310	U3R Damon Ultima .022 Retrocline TQ
Cuspid Procline	333-2320	U3L Damon Ultima .022 Procline TQ
	333-1320	U3R Damon Ultima .022 Procline TQ
Bicuspid (Universal) Neutral	333-2400	U4&5L Damon Ultima .022 -4/2/0 Neutral TQ
	333-1400	U4&5R Damon Ultima .022 -4/2/0 Neutral TQ
	333-2406	U4&5L Damon Ultima G-OFF .022 -4/2/0 Neutral TQ
	333-1406	U4&5R Damon Ultima G-OFF .022 -4/2/0 Neutral TQ

Part Number	Archwire Description
227-1118	Damon Ultima Archwire TMA 10pk .018X.0275
227-1116	Damon Ultima Archwire TMA 10pk .019X.0275
227-1122	Damon Ultima Archwire TMA 10pk .020X.0275
227-1123	Damon Ultima Archwire TMA 10pk .021X.0275
227-1161	Damon Ultima Archwire CuNiTi w/stops 10pk - .014 x .0275
227-1163	Damon Ultima Archwire CuNiTi w/stops 10pk - .018 x .0275
227-1164	Damon Ultima Archwire CuNiTi w/stops 10pk - .019 x .0275
227-1165	Damon Ultima Archwire CuNiTi w/stops 10pk - .020 x .0275
227-1166	Damon Ultima Archwire CuNiTi w/stops 10pk - .021 x .0275
227-1267	Damon Ultima Archwire SST 10pk .016X.0275
227-1272	Damon Ultima Archwire SST 10pk .018X.0275
227-1271	Damon Ultima Archwire SST 10pk .019X.0275
227-1273	Damon Ultima Archwire SST 10pk .020X.0275
227-1274	Damon Ultima Archwire SST 10pk .021X.0275

MANDIBULAR	Part Number	Description
Central Neutral	333-3100	L1L Damon Ultima .022 -1/2/0 Neutral TQ
	333-4100	L1R Damon Ultima .022 -1/2/0 Neutral TQ
Central Retrocline	333-3110	L1L Damon Ultima .022 Retrocline TQ
	333-4110	L1R Damon Ultima .022 Retrocline TQ
Central Procline	333-3120	L1L Damon Ultima .022 Procline TQ
	333-4120	L1R Damon Ultima .022 Procline TQ
Lateral Neutral	333-3200	L2L Damon Ultima .022 -1/4/0 Neutral TQ
	333-4200	L2R Damon Ultima .022 -1/4/0 Neutral TQ
Lateral Retrocline	333-3210	L2L Damon Ultima .022 Retrocline TQ
	333-4210	L2R Damon Ultima .022 Retrocline TQ
Lateral Procline	333-3220	L2L Damon Ultima .022 Procline TQ
	333-4220	L2R Damon Ultima .022 Procline TQ
Cuspid Neutral	333-3300	L3L Damon Ultima .022 -3/5/0 Neutral TQ
	333-4300	L3R Damon Ultima .022 -3/5/0 Neutral TQ
Cuspid Retrocline	333-3310	L3L Damon Ultima .022 Retrocline TQ
	333-4310	L3R Damon Ultima .022 Retrocline TQ
Cuspid Procline	333-3320	L3L Damon Ultima .022 Procline TQ
	333-4320	L3R Damon Ultima .022 Procline TQ
1st Bi Neutral	333-3400	L4L Damon Ultima .022 -12/4/0 Neutral TQ
	333-4400	L4R Damon Ultima .022 -12/4/0 Neutral TQ
	333-3406	L4L Damon Ultima G-OFF .022 -12/4/0 Neutral TQ
	333-4406	L4R Damon Ultima G-OFF .022 -12/4/0 Neutral TQ
2nd Bi Neutral	333-3500	L5L Damon Ultima .022 -17/4/0 Neutral TQ
	333-4500	L5R Damon Ultima .022 -17/4/0 Neutral TQ
	333-3506	L5L Damon Ultima G-OFF .022 -17/4/0 Neutral TQ
	333-4506	L5R Damon Ultima G-OFF .022 -17/4/0 Neutral TQ

For more information,  
contact your Ormco Sales Representative.

Visit [ormco.com/ultima](http://ormco.com/ultima)